

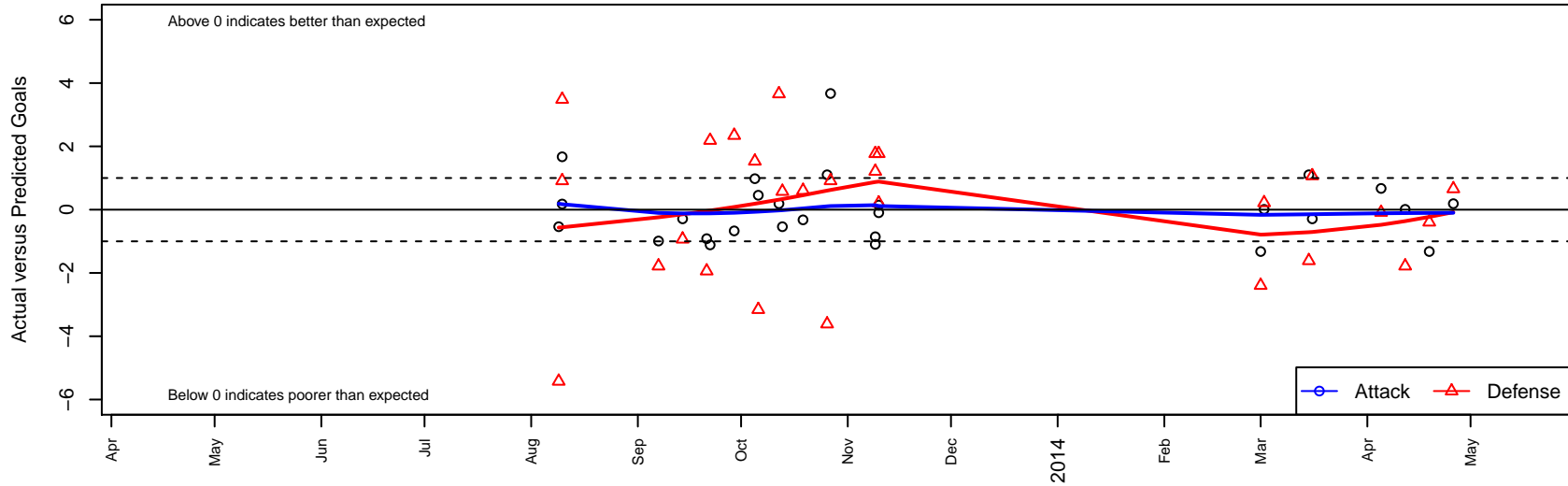
HSC Phoenix B02

Hillsboro SC
 Hillsboro, OR
 B02 total strength=73
 attack=0.12 defense=0.06
 fall league = OPL Second Division U11, Spr OF
 alt names used:
 HSC Phoenix
 HSC Phoenix
 HSC U11 Phoenix

Venues played:
 Chinook Cup Silver U11
 OPL Second Division U11
 Hillsboro Invitational BU11
 Spr OPL Nehalem Division U11



HSC Phoenix B02
 Dots are actual minus expected GF (blue circles) and GA (red triangles).
 Blue line is smoothed change in attack strength. Red is smoothed change in defense strength.



	date	home		away		venue	pred.home	pred.away
26705	2014-04-26	WUSC Manchester United White B02	4	HSC Phoenix B02	1	Spr OPL Nehalem Division U11	4.66	0.81
26553	2014-04-19	HSC Phoenix B02	0	THUSC Beryllium Green B02	4	Spr OPL Nehalem Division U11	1.32	3.61
26004	2014-04-12	HSC Phoenix B02	1	FC Salmon Creek Juventus B02	4	Spr OPL Nehalem Division U11	0.99	2.22
25606	2014-04-05	HSC Phoenix B02	2	Southside SC Chaos B02	2	Spr OPL Nehalem Division U11	1.33	1.91
24889	2014-03-16	FC Portland White B02	1	HSC Phoenix B02	1	Spr OPL Nehalem Division U11	2.07	1.29
24547	2014-03-15	HSC Phoenix B02	2	Valley Football Club Avengers B02	4	Spr OPL Nehalem Division U11	0.90	2.39
23655	2014-03-02	FC Salmon Creek Juventus B02	2	HSC Phoenix B02	1	Spr OPL Nehalem Division U11	2.22	0.99
23394	2014-03-01	THUSC Beryllium Green B02	6	HSC Phoenix B02	0	Spr OPL Nehalem Division U11	3.61	1.32
17991	2013-11-10	HSC Phoenix B02	1	UUSC Force B02	3	Hillsboro Invitational BU11	0.86	3.21
17993	2013-11-10	PCU White B02	0	HSC Phoenix B02	1	Hillsboro Invitational BU11	1.77	1.10
17559	2013-11-09	PCU White B02	0	HSC Phoenix B02	0	Hillsboro Invitational BU11	1.77	1.10
17561	2013-11-09	HSC Phoenix B02	0	UUSC Force B02	2	Hillsboro Invitational BU11	0.86	3.21
16169	2013-10-27	HSC Phoenix B02	5	Southside SC Chaos B02	1	OPL Second Division U11	1.33	1.91
15701	2013-10-26	Valley Football Club Avengers B02	6	HSC Phoenix B02	2	OPL Second Division U11	2.39	0.90
14764	2013-10-19	THUSC Beryllium Green B02	3	HSC Phoenix B02	1	OPL Second Division U11	3.61	1.32
14274	2013-10-13	Eastside Timbers White B02	5	HSC Phoenix B02	0	OPL Second Division U11	5.58	0.54
13718	2013-10-12	HSC Phoenix B02	1	WUSC Manchester United White B02	1	OPL Second Division U11	0.81	4.66
13208	2013-10-06	HSC Phoenix B02	1	Thelo Spartans B02	9	OPL Second Division U11	0.54	5.84
12670	2013-10-05	HSC Phoenix B02	2	NEU Barca Blue B02	2	OPL Second Division U11	1.02	3.53
12256	2013-09-29	HSC Phoenix B02	0	CUSC Red B02	2	OPL Second Division U11	0.67	4.34
11332	2013-09-22	HSC Phoenix B02	0	Pacific FC Revolution B02	6	OPL Second Division U11	1.11	8.19
10800	2013-09-21	Westside Timbers Mundial B02	7	HSC Phoenix B02	0	OPL Second Division U11	5.06	0.92
9824	2013-09-14	FC Portland White B02	3	HSC Phoenix B02	1	OPL Second Division U11	2.07	1.29
8883	2013-09-07	FC Salmon Creek Juventus B02	4	HSC Phoenix B02	0	OPL Second Division U11	2.22	0.99
6102	2013-08-10	HSC Phoenix B02	3	Southside SC Chaos B02	1	Chinook Cup Silver U11	1.33	1.91
6104	2013-08-10	HSC Phoenix B02	1	FC Salmon Creek Avalanche B02	4	Chinook Cup Silver U11	0.82	7.48
5865	2013-08-09	Eastside Timbers White B02	11	HSC Phoenix B02	0	Chinook Cup Silver U11	5.58	0.54